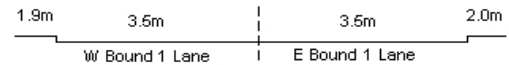
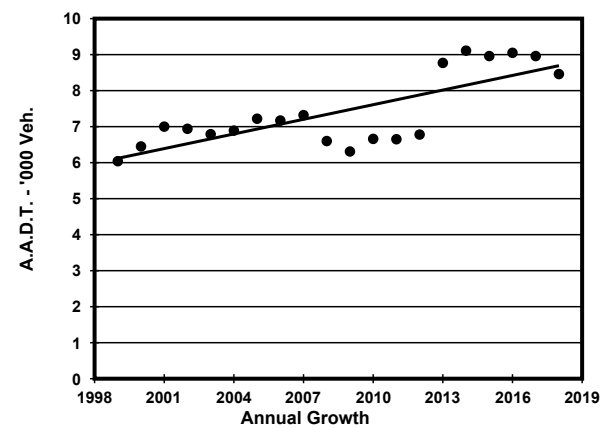
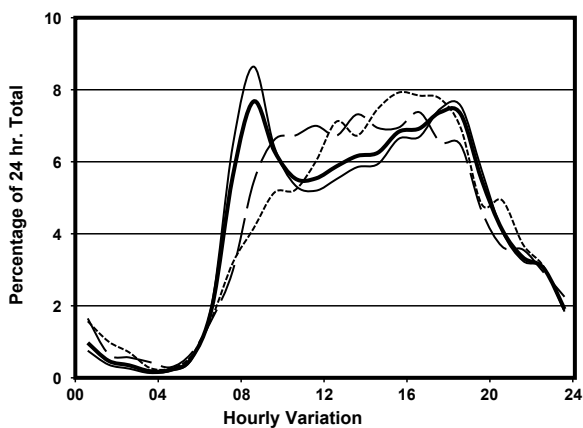
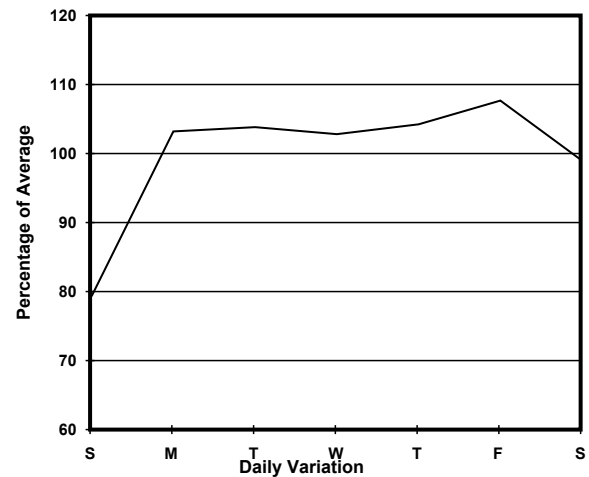
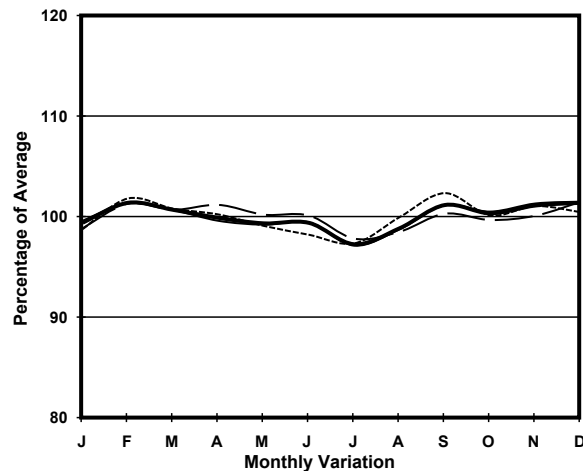


YEAR 2018  
 COVERAGE (B) STATION 2206  
 ROAD NETWORK MAJOR  
 ROAD TYPE DISTRICT DISTRIBUTOR

LINK BELCHER'S ST & VICTORIA RD (from SMITHFIELD to MOUNT DAVIS RD)



## 1. TRAFFIC FLOW VARIATION AND GROWTH



— All day — Mon.- Fri. ..... Sat. - - - - Sun.

## 2. TRAFFIC CHARACTERISTICS (BY DIRECTION)

Parameter	All - Day	Mon. - Fri.	Sat.	Sun.
<b>EAST BOUND</b>				
A.A.D.T.	3790	4050	3600	3020
R 12 / 24 - %	78	78.7	76.7	74.8
R 16 / 24 - %	93.5	94.1	91.5	91.4
AM Peak Hour	0800-0900	0800-0900	0900-1000	0900-1000
One-way flow at AM peak hour	320	390	240	170
T - % (AM)	-	9.8	-	-
PM Peak Hour	1700-1800	1700-1800	1700-1800	1700-1800
One-way flow at PM peak hour	310	330	250	250
T - % (PM)	-	13.5	-	-
Prop.of commercial vehicles - 16 hr.	-	16.4	-	-
<b>WEST BOUND</b>				
A.A.D.T.	4670	4870	4870	3770
R 12 / 24 - %	76.9	76.9	77.3	76
R 16 / 24 - %	93.3	93.7	92.1	92.5
AM Peak Hour	0800-0900	0800-0900	0900-1000	0900-1000
One-way flow at AM peak hour	330	380	320	180
T - % (AM)	-	14.6	-	-
PM Peak Hour	1800-1900	1800-1900	1600-1700	1600-1700
One-way flow at PM peak hour	330	360	380	310
T - % (PM)	-	11	-	-
Prop.of commercial vehicles - 16 hr.	-	12.3	-	-

## 3. OTHER INFORMATION AND COMMENT

**Coverage (B) Station 2206**  
**Year 2018**

**4. Vehicle classification and occupancy - Monday to Friday**

Time		Class of vehicle									
		Motor Cycle	Private Car	Taxi	Private LB	PLB	Goods veh.		Non Fr. Bus	Fr. Bus	
							Light	M & H		SD	DD
0700-0800	Pro	2.6	30.9	16.3	1.7	11.2	10.3	12.0	9.4	0.0	5.6
	Ocp	1.0	1.6	1.7	3.0	14.6	2.1	1.5	28.3	0.0	17.5
0800-0900 Peak hour	Pro	3.0	54.3	9.0	2.5	9.5	9.5	4.0	5.0	0.0	3.0
	Ocp	1.0	1.6	1.8	4.6	13.2	2.3	1.9	12.2	0.0	23.8
0900-1000	Pro	4.1	42.6	8.2	2.9	7.6	18.7	7.6	4.1	0.0	4.2
	Ocp	1.1	1.5	1.9	2.4	14.3	1.8	1.7	26.4	0.0	12.2
1000-1100	Pro	4.7	42.4	10.1	1.3	7.4	20.2	6.7	1.3	0.0	5.7
	Ocp	1.3	1.3	1.8	2.5	11.0	1.8	1.3	2.0	0.0	6.6
1100-1200	Pro	4.9	42.3	14.6	1.6	7.3	12.2	8.1	2.4	0.0	6.5
	Ocp	1.2	1.4	1.7	2.5	14.1	1.3	1.5	8.3	0.0	6.0
1200-1300	Pro	3.2	43.6	13.7	2.4	8.9	10.5	8.1	4.0	0.0	5.5
	Ocp	1.0	1.7	1.9	2.3	13.5	1.8	1.3	17.8	0.0	13.2
1300-1400	Pro	3.3	27.7	20.4	2.4	10.6	21.2	4.9	3.3	0.0	6.3
	Ocp	1.0	1.5	1.8	1.0	11.8	1.7	1.2	11.8	0.0	6.7
1400-1500	Pro	5.1	34.2	15.3	5.8	5.8	21.9	4.4	2.2	0.0	5.3
	Ocp	1.0	1.4	1.7	1.9	13.6	1.6	1.3	3.3	0.0	7.0
1500-1600	Pro	2.8	37.8	20.6	1.4	7.6	19.2	2.1	2.8	0.0	5.8
	Ocp	1.5	1.5	2.2	8.0	13.8	1.4	1.0	15.0	0.0	7.5
1600-1700	Pro	2.6	40.5	13.1	3.9	9.8	17.0	4.6	3.3	0.0	5.4
	Ocp	1.0	1.6	2.1	2.8	13.9	2.0	1.6	6.2	0.0	9.9
1700-1800	Pro	4.0	39.1	20.3	2.0	7.4	13.4	5.9	3.0	0.0	5.0
	Ocp	1.1	1.8	2.0	2.0	13.3	1.6	1.5	2.2	0.0	12.5
1800-1900	Pro	4.2	36.9	34.5	1.2	6.7	3.0	1.8	6.7	0.0	5.0
	Ocp	1.0	1.7	1.9	1.0	17.6	1.2	1.3	34.8	0.0	13.5
1900-2000	Pro	3.4	55.1	19.1	0.0	6.2	4.5	2.8	3.4	0.0	5.5
	Ocp	1.2	1.4	2.0	0.0	14.8	1.1	1.0	8.0	0.0	9.0
2000-2100	Pro	2.9	46.3	29.4	1.5	5.1	3.7	5.9	0.0	0.0	5.1
	Ocp	1.3	1.3	2.0	2.0	13.0	1.2	1.1	0.0	0.0	7.9
2100-2200	Pro	8.3	47.2	20.1	1.2	10.6	0.0	4.7	1.2	0.0	6.8
	Ocp	1.0	1.8	1.6	3.0	9.8	0.0	1.8	1.0	0.0	4.9
2200-2300	Pro	10.6	32.8	26.5	0.0	12.7	3.2	5.3	3.2	0.0	5.8
	Ocp	1.1	1.5	1.8	0.0	10.2	1.3	1.4	8.3	0.0	9.6
16 hours	Pro	4.1	41.5	17.9	2.0	8.2	12.1	5.4	3.5	0.0	5.3
	Ocp	1.1	1.5	1.9	2.7	13.3	1.7	1.4	16.7	0.0	10.3

**Legend**

**Pro.** Proportion of vehicles in % (Sum may not add up to 100% due to figure rounding)\*

**Ocp.** Average occupancy of vehicles including both driver and passengers\*

**M&H** Medium and Heavy

**\*** All traffic data are collected from combined bounds except for one way traffic